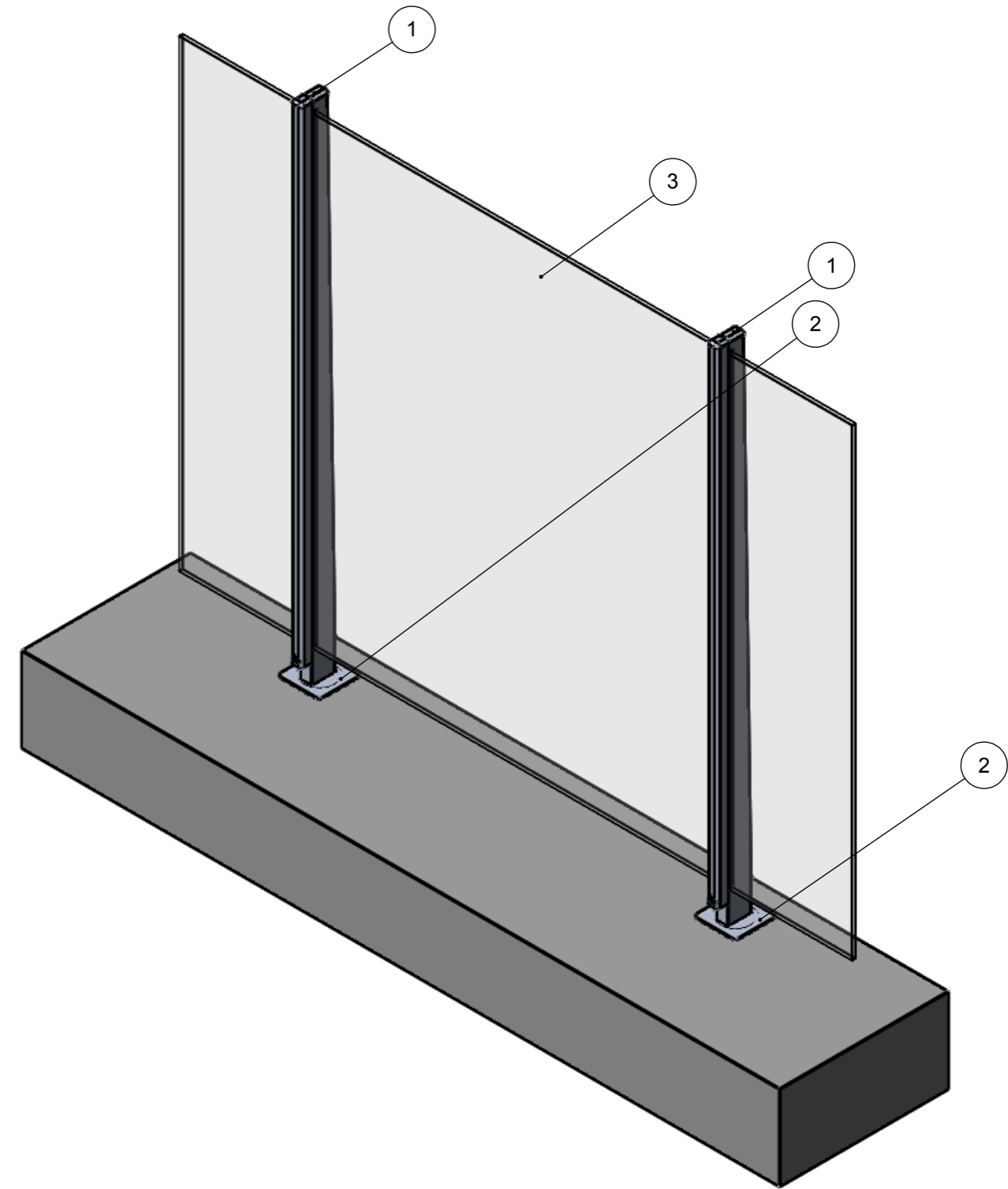


PROTOTYPE - POST COVER PLATE



ITEM	PART NAME	DRAWING	QTY.
1	PROTOTYPE - POST ASSY	SHEET 2	2
2	PROTOTYPE - POST COVER PLATE	THIS	2
3	PROTOTYPE - 1600 GLASS	THIS	1

REV	REVISION NOTES	DATE	BY
E	ADDITIONAL CLEARANCE FOR GLASS	22/06/2015	RAW
D	ADD RADIUS TO STRESS POINT. REDUCE SPACE FOR SEAL TO INCREASE GLASS CLAMPING PRESSURE	30/04/2015	RAW
C	REVISIONS TO HEIGHT & SPACINGS	21/04/2015	RAW
B	SQ COVER PLATES. ONE SIZE SHCS	5/08/2014	RAW
A	INITIAL DRAWING	3/08/2014	RAW



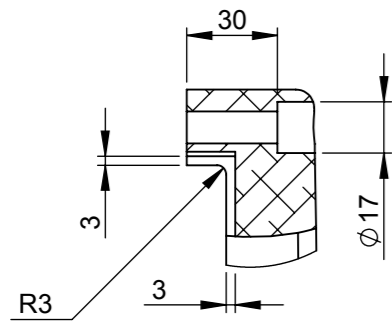
ABNC
 PHONE: 61 7 5493 8333
 WEB: www.abnc.com.au
 MAIL: admin@abnc.com.au

© Architectural Metalworks Australia - All Rights Reserved
 This document is produced by Architectural Metalworks Aust (AMA) solely for the benefit of and use by the client in accordance with the terms of the contract. AMA Does not and shall not assume any responsibility or liability whatsoever to any third party arising out of any use or reliance by third party on the content of this document. This document may not be used, sold, transferred, copied or reproduced in whole or in part in any manner or form or on any media, to any person other than by agreement with Architectural Metalworks Australia.

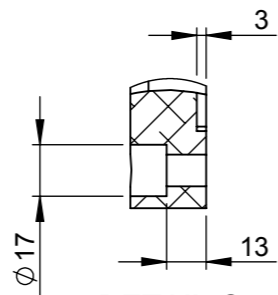
WEIGHT	52.5 KGS
DRAWN	RAW 03/08/2014

CLIENT
ARCHITECTURAL METALWORKS AUSTRALIA
 PROJECT
PROTOTYPE GLASS BALUSTRADE
 SITE ADDRESS
15/17 BEARING AVE
WARANA

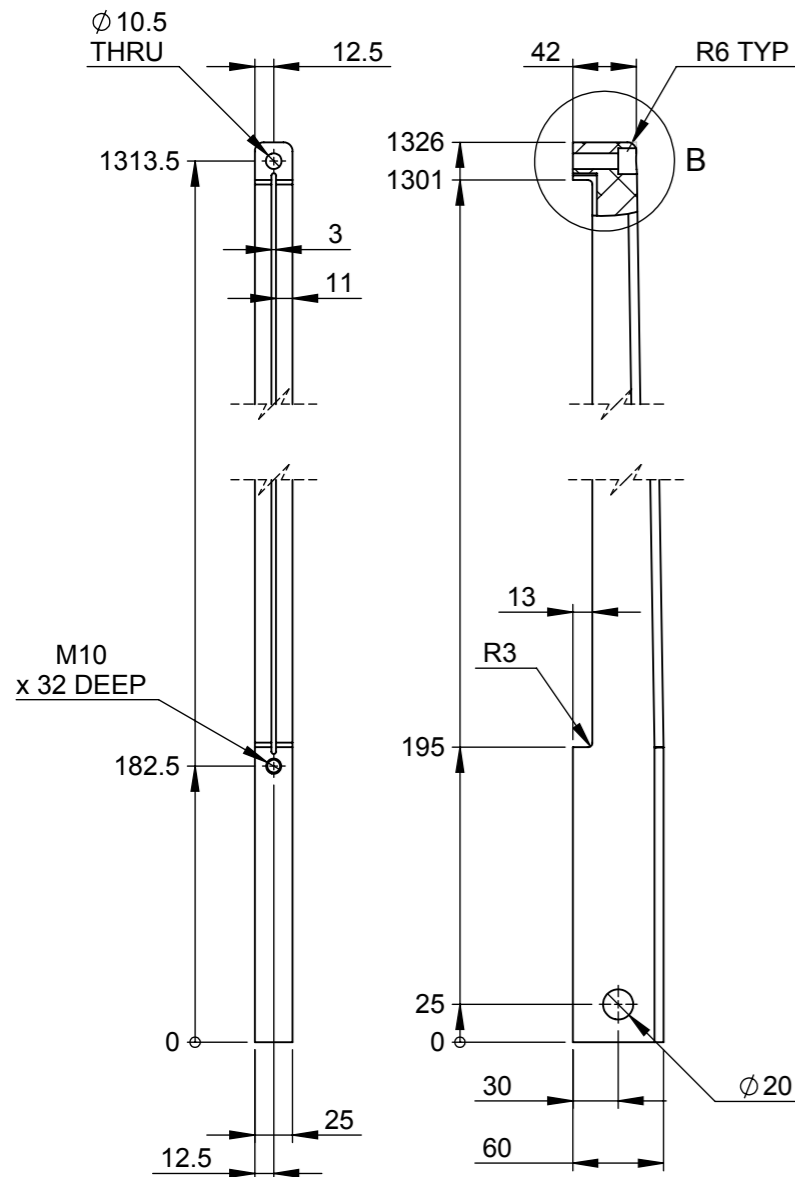
COLOUR	-
ITEM DESCRIPTION	GLASS BALUSTRADE
DWG NO. (PROJECT# - ITEM CODE - LEVEL#)	PROTO-BAL-GR
SHEET	1 OF 3
SCALE	1:10
REVISION	E
	A3



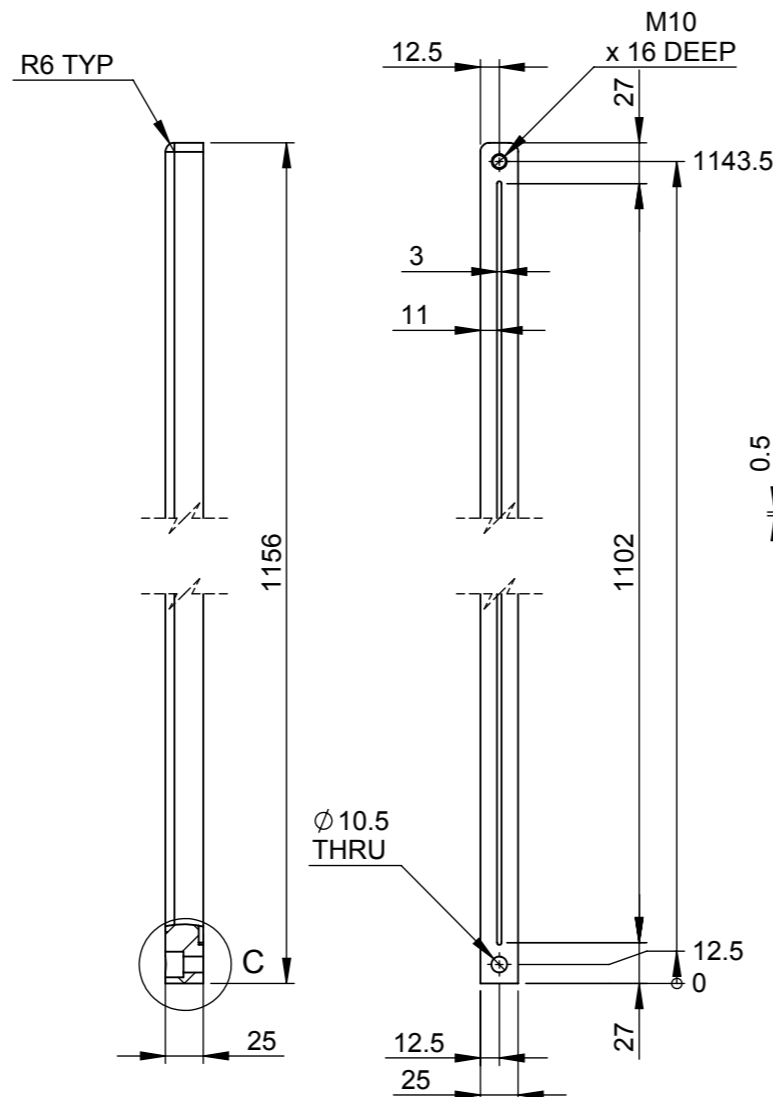
DETAIL B
SCALE 2 : 5



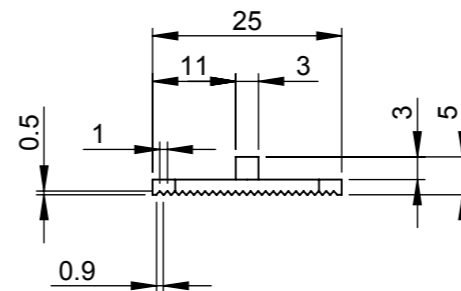
DETAIL C
SCALE 2 : 5



PROTOTYPE - POST FRONT

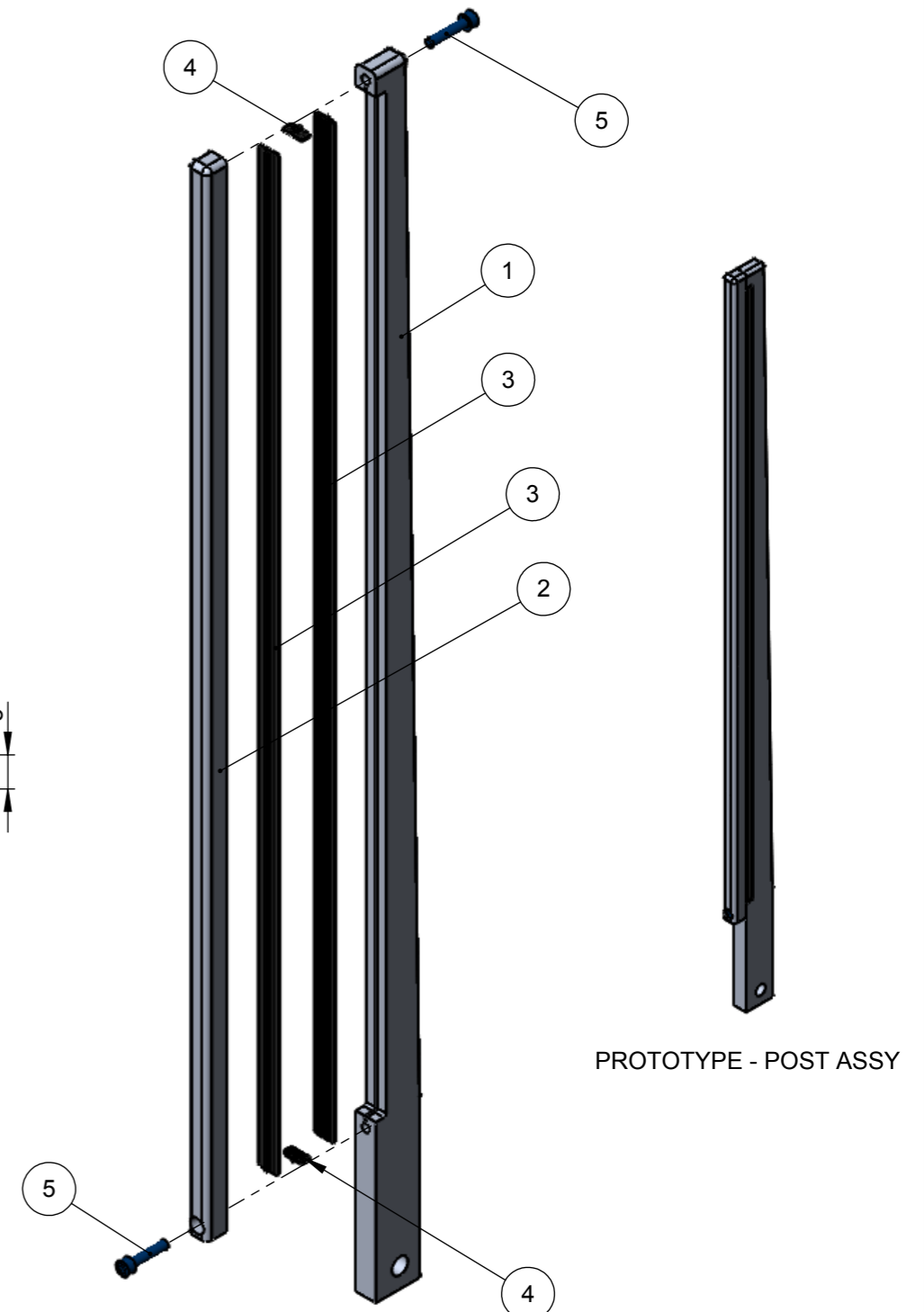


PROTOTYPE - POST BACK



SCALE 1 : 1

PROTOTYPE - POST SEAL
PROFILE



PROTOTYPE - POST ASSY - EXPLODED VIEW
SCALE 1 : 6

ITEM	PART NAME	MATERIAL	LENGTH	WEIGHT	AREA/M	SUPPLIER	SUPPLIER CODE	DRAWING	QTY
1	PROTOTYPE - POST FRONT	25MM ALUMINIUM PLATE	60 x 1326	3.6		ALSUN	PLATE 5083-H321	THIS	1
2	PROTOTYPE - POST BACK	25MM ALUMINIUM PLATE	25 x 1156	1.8		ALSUN	PLATE 5083-H321	THIS	1
3	PROTOTYPE - POST SEAL	BLACK FLEXIBLE PVC	1102	0.1		LLOYDS PACIFIC PLASTICS	P1182	N/A	2
4	PROTOTYPE - POST SEAL	BLACK FLEXIBLE PVC	12	0.0		LLOYDS PACIFIC PLASTICS	P1182	N/A	2
5	SHCS-M10	STAINLESS STEEL	45.0	0.04	N/A	ANZOR		N/A	2



ABNC
 PHONE: 61 7 5493 8333
 WEB: www.abnc.com.au
 MAIL: admin@abnc.com.au

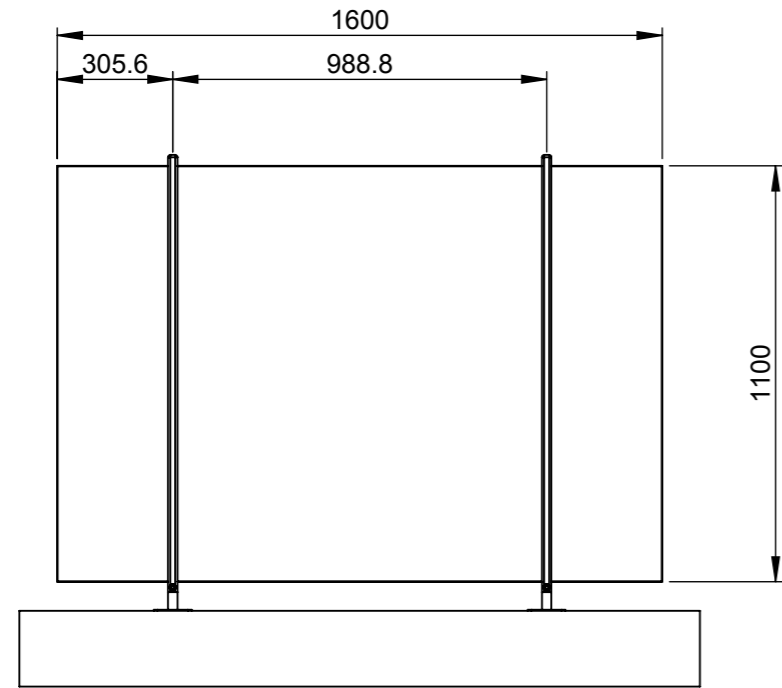
© Architectural Metalworks Australia - All Rights Reserved
 This document is produced by Architectural Metalworks Aust (AMA) solely for the benefit of and use by the client in accordance with the terms of the contract. AMA Does not and shall not assume any responsibility or liability whatsoever to any third party arising out of any use or reliance by third party on the content of this document. This document may not be used, sold, transferred, copied or reproduced in whole or in part in any manner or form or on any media, to any person other than by agreement with Architectural Metalworks Australia.

WEIGHT 5.6 KGS
 DRAWN RAW 03/08/2014

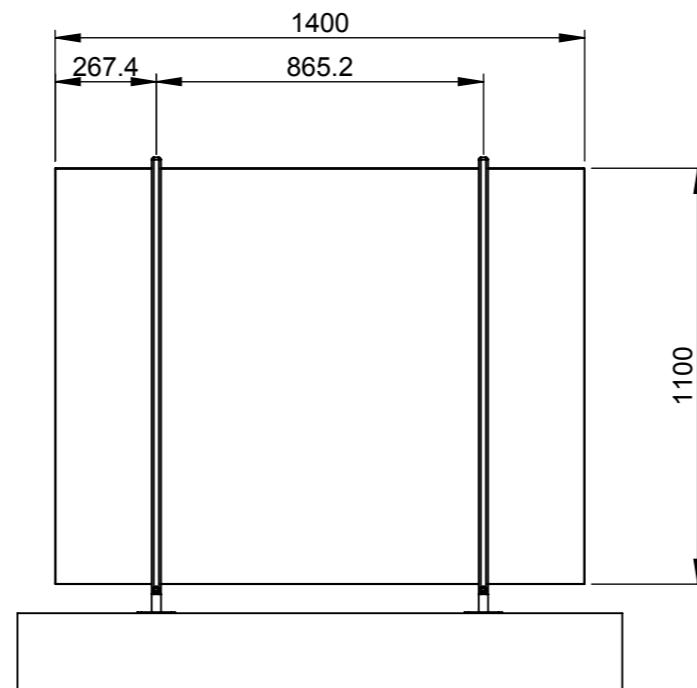
CLIENT ARCHITECTURAL METALWORKS AUSTRALIA
 PROJECT PROTOTYPE GLASS BALUSTRADE
 SITE ADDRESS 15/17 BEARING AVE
 WARANA

COLOUR -
 ITEM DESCRIPTION GLASS BALUSTRADE
 DWG NO. (PROJECT# - ITEM CODE - LEVEL#)
 PROTO-BAL-GR

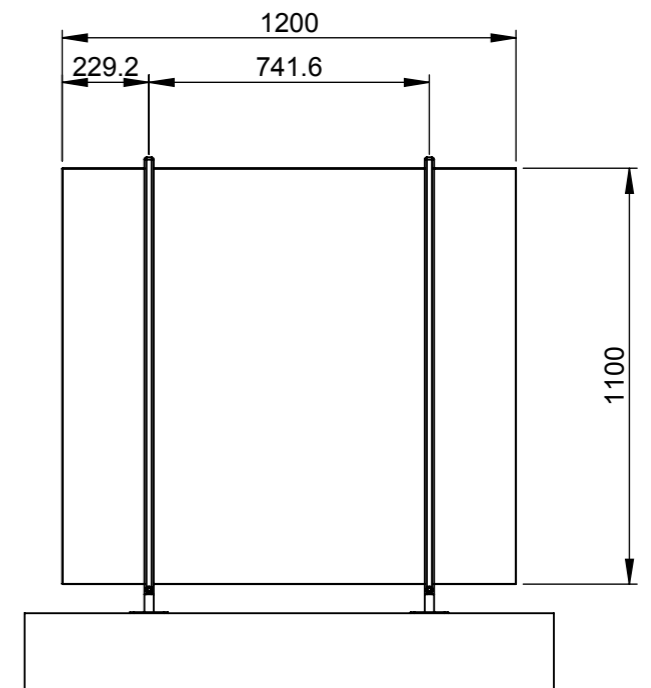
SHEET 2 OF 3
 SCALE 1:5
 REVISION E
 A3



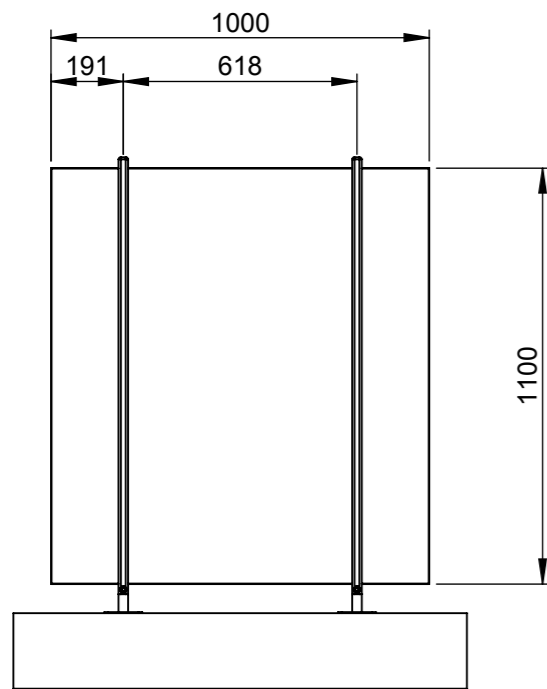
PROTOTYPE - 1600 PANEL ASSY



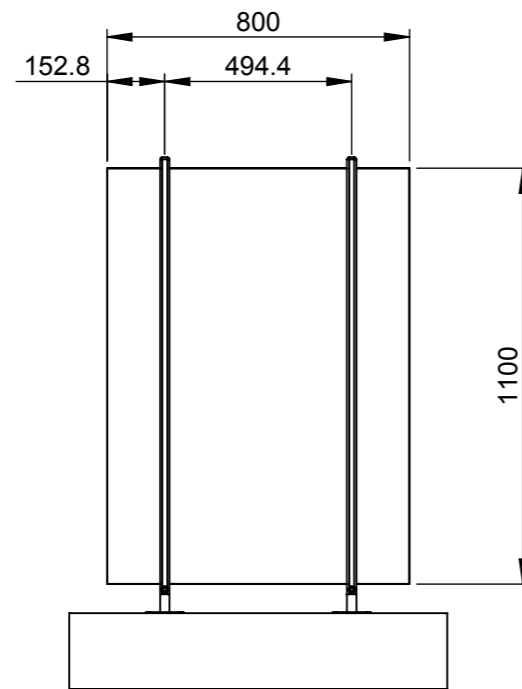
PROTOTYPE - 1400 PANEL ASSY



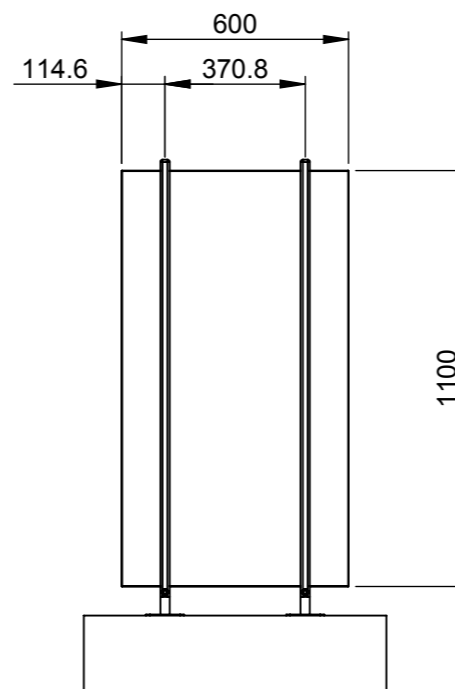
PROTOTYPE - 1200 PANEL ASSY



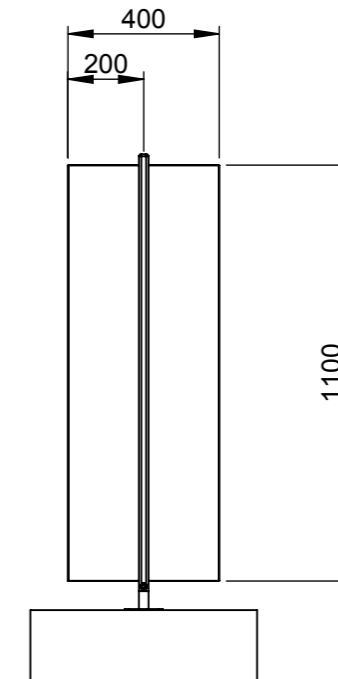
PROTOTYPE - 1000 PANEL ASSY



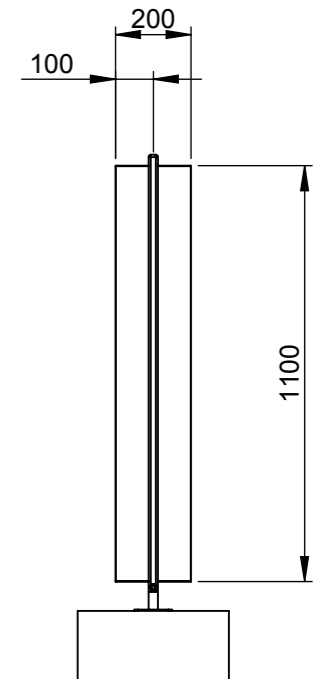
PROTOTYPE - 800 PANEL ASSY



PROTOTYPE - 600 PANEL ASSY



PROTOTYPE - 400 PANEL ASSY



PROTOTYPE - 200 PANEL ASSY



ABNC
 PHONE: 61 7 5493 8333
 WEB: www.abnc.com.au
 MAIL: admin@abnc.com.au

© Architectural Metalworks Australia - All Rights Reserved
 This document is produced by Architectural Metalworks Aust (AMA) solely for the benefit of and use by the client in accordance with the terms of the contract. AMA Does not and shall not assume any responsibility or liability whatsoever to any third party arising out of any use or reliance by third party on the content of this document. This document may not be used, sold, transferred, copied or reproduced in whole or in part in any manner or form or on any media, to any person other than by agreement with Architectural Metalworks Australia.

WEIGHT	52.5 KGS
DRAWN	RAW 03/08/2014

CLIENT
ARCHITECTURAL METALWORKS AUSTRALIA
 PROJECT
PROTOTYPE GLASS BALUSTRADE
 SITE ADDRESS
15/17 BEARING AVE
WARANA

COLOUR	-
ITEM DESCRIPTION	GLASS BALUSTRADE
DWG NO. (PROJECT# - ITEM CODE - LEVEL#)	PROTO-BAL-GR
SHEET	3 OF 3
SCALE	1:20
REVISION	E
	A3